

Summary of research findings

Environment and
Society Programme

Daniel Quiggin, Kris De Meyer,
Lucy Hubble-Rose and
Antony Froggatt

September 2021

Climate change risk

Institute for Public Policy Research

IPPR

WE ARE NOT READY

POLICYMAKING
IN THE AGE OF
ENVIRONMENTAL
BREAKDOWN

FINAL REPORT

Laurie Laybourn-Langton,
Joshua Emden and Tom Hill

June 2020

门诊
OUT-PA

Outline programme

- Welcome. Introductions in Chat.
- Introduction to the Risk Assessment
- Choose your topic
- Breakout groups
- Feedback and discussion
- UK policy responses
- Looking ahead





**Heat, productivity
and health**



Food security



Water security



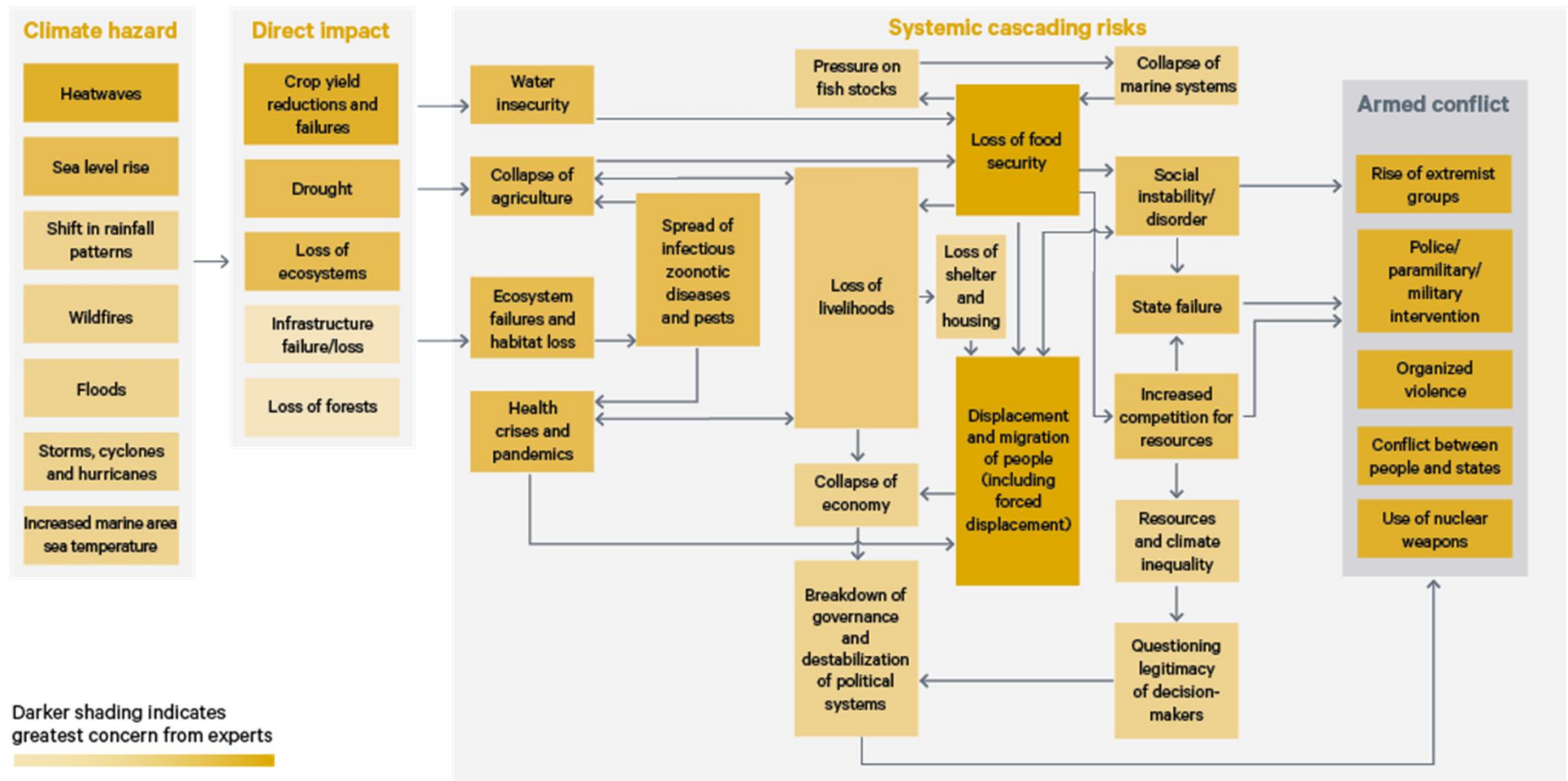
Flooding



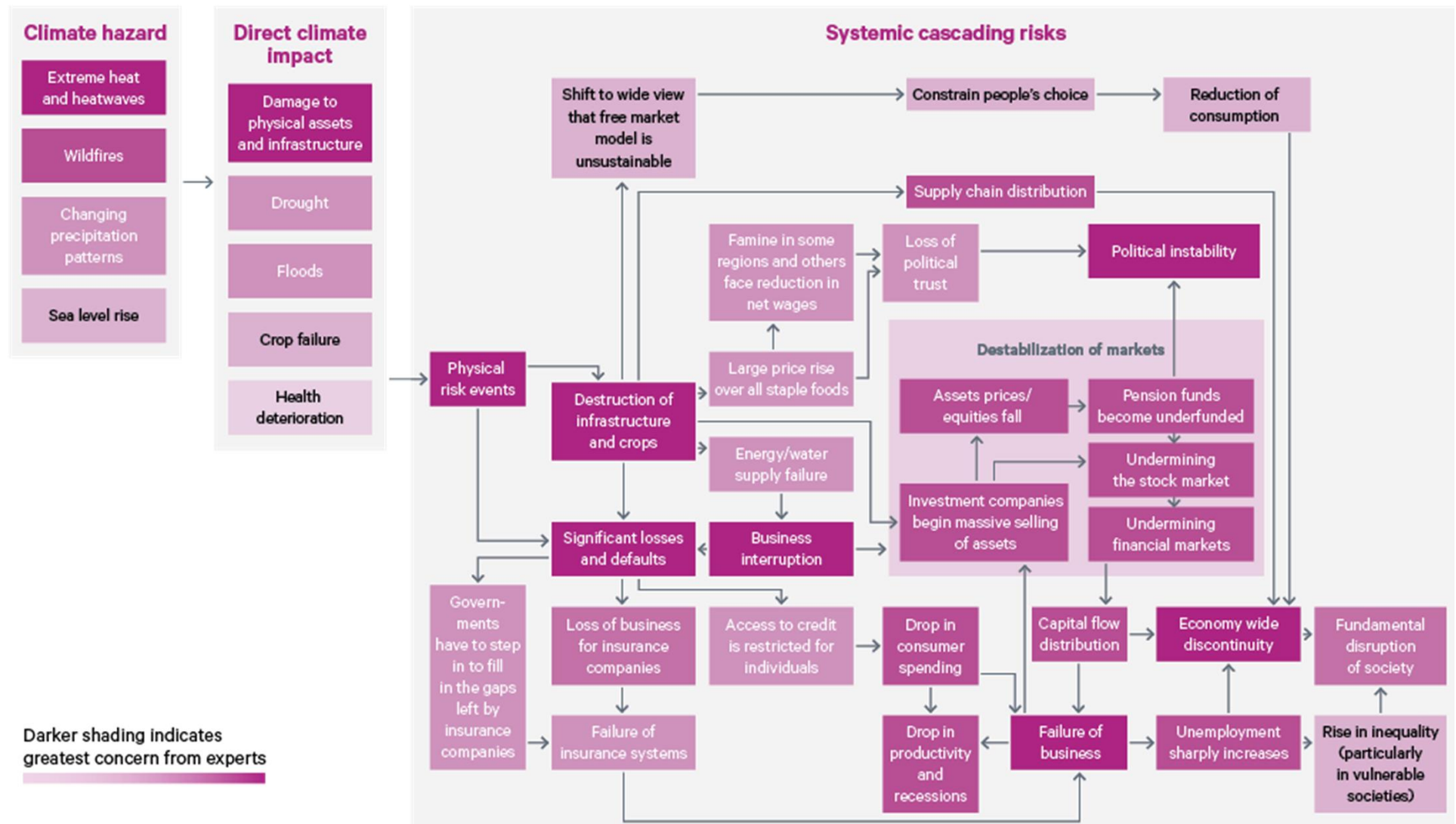
**Tipping points and
cascading risks**

Five areas of climate change impacts and adverse consequences that will become severe over the next 20–30 years

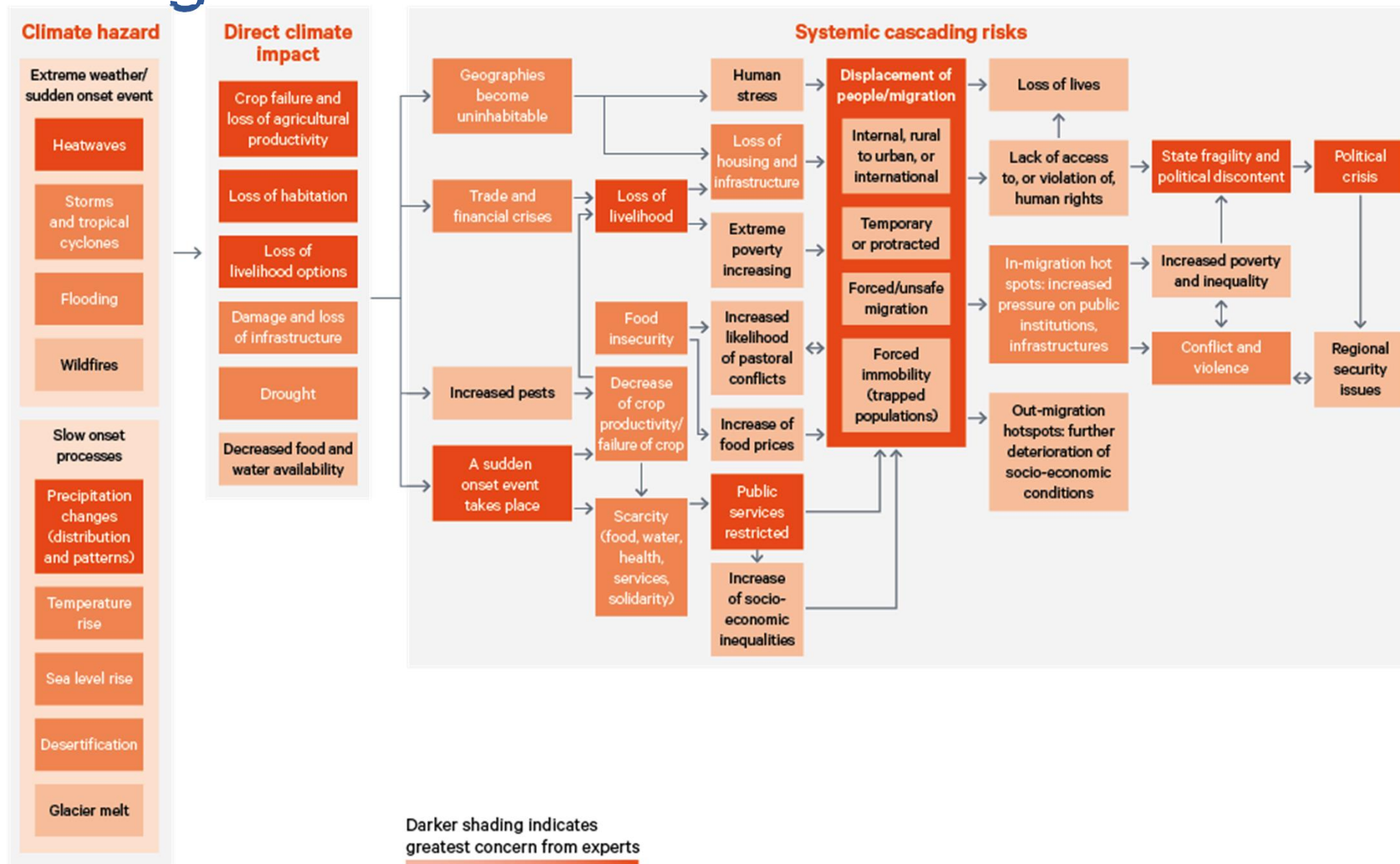
National and international security



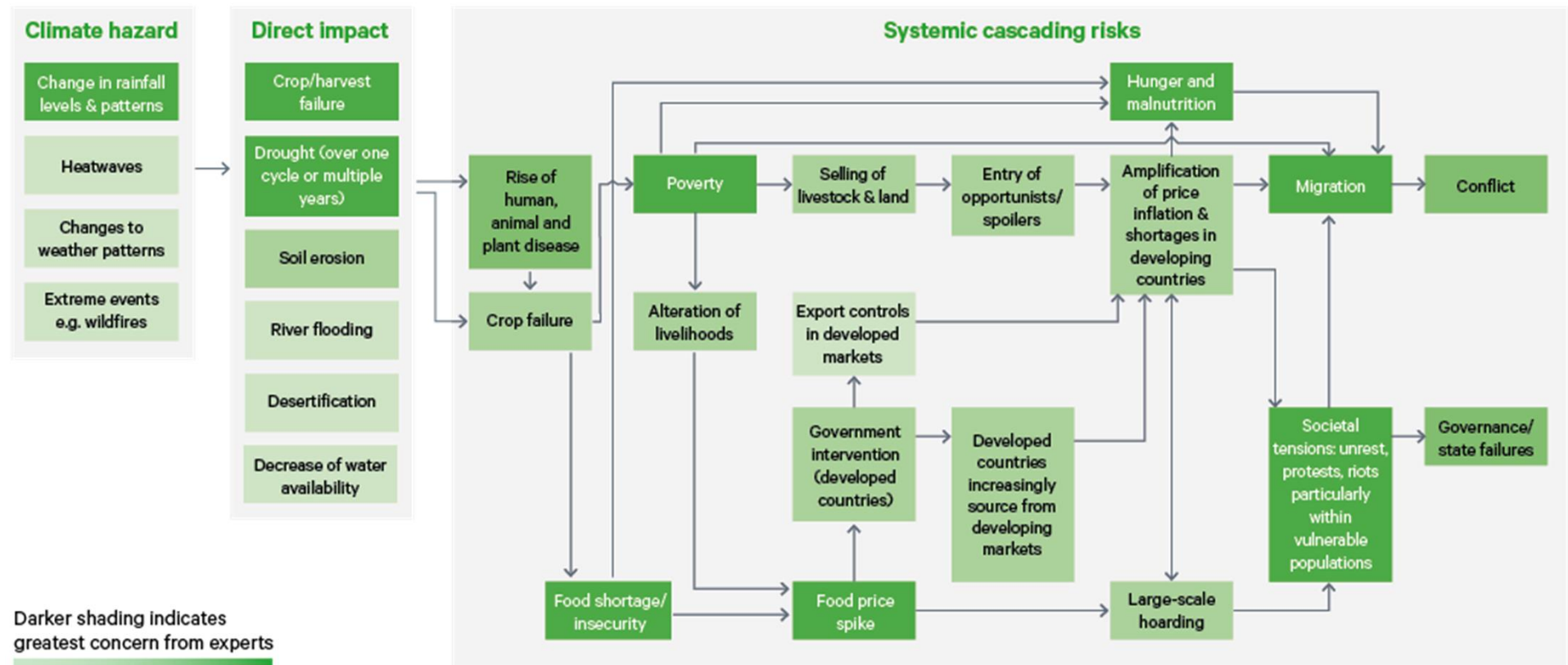
Economic and trade disruption



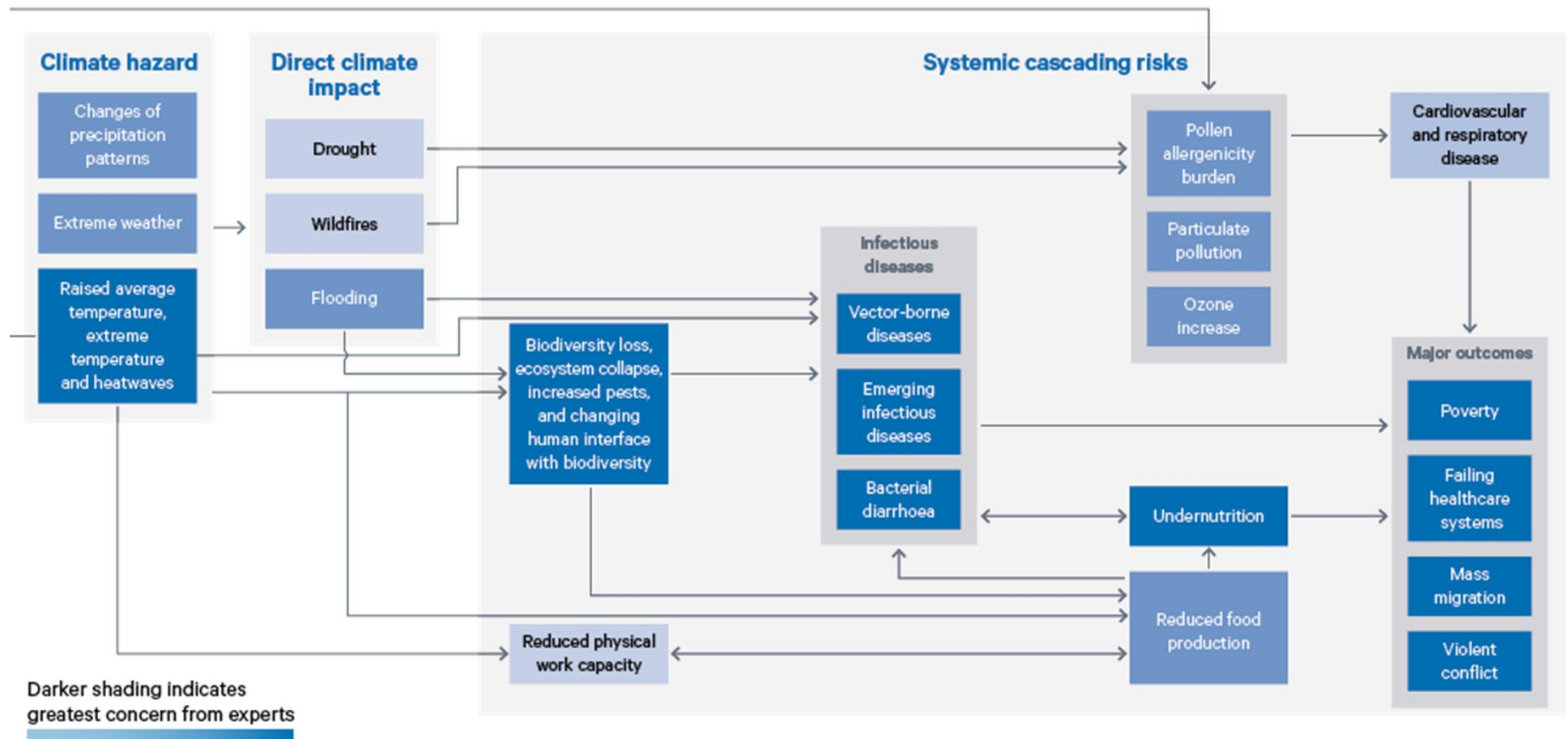
Migration risks



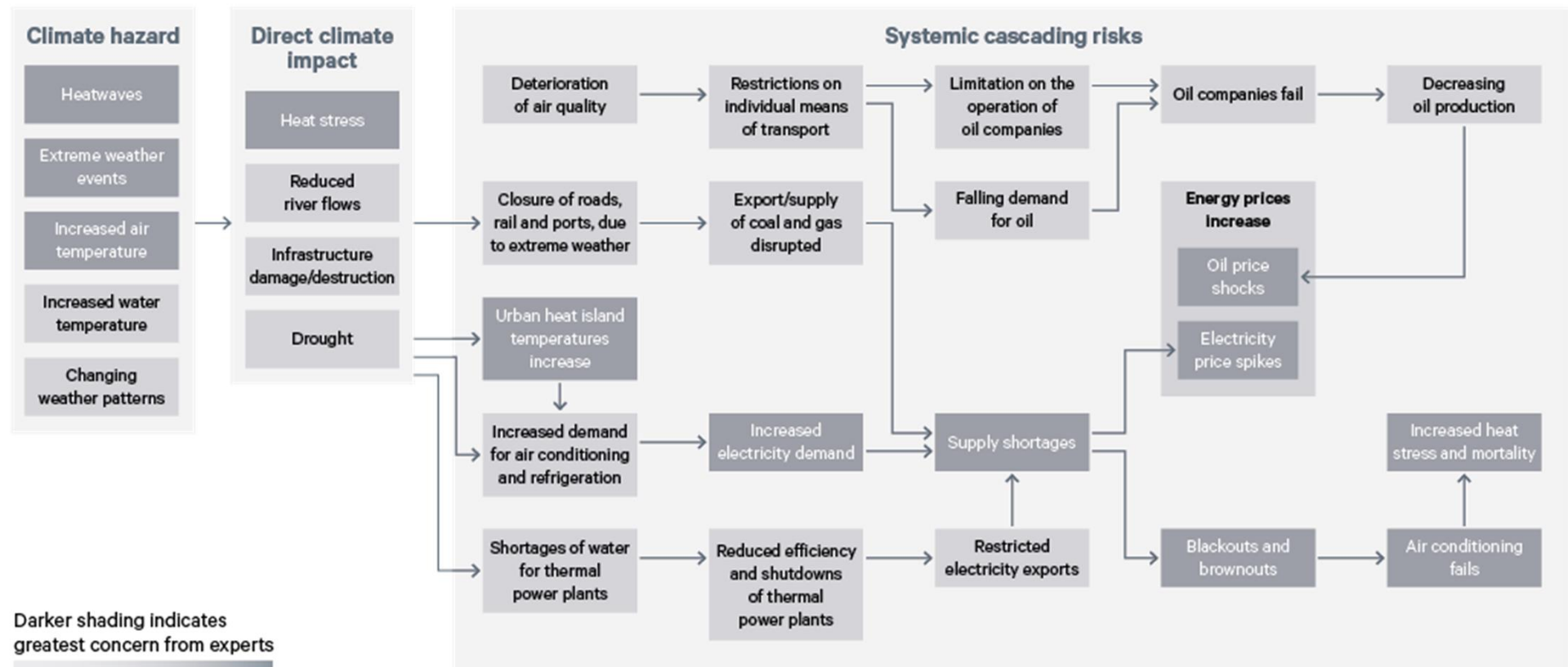
Food security



Health crises



Energy security



“Responding to environmental breakdown means undertaking a directed transformation of socioeconomic systems to realise societies that are....:

- **Sustainable:** thriving within environmental limits
- **Just:** a just transition for all
- **Prepared:** realising the benefits of more resilient systems”



<https://www.ippr.org/research/publications/we-are-not-ready>

Recommendations for preparedness

- A **Royal Commission on Preparations for Environmental Breakdown** to inform policy and to openly engage the public
- A **national education programme** on environmental breakdown, including a **Future Leaders Fund**, to develop the competencies needed in destabilisation.
- **Integrated risk assessment and planning** driving coordination across government.

Search the menus (Alt+/)

↶ ↷ 🖨 📌 150% \$ % .0 .00 123 Arial 11 B I S A

H5	A	B	C	D	E	F	G	H	I	J
1	Please add your initials alongside two topics you would like to discuss in breakout rooms									
2										
3		Your first choice						Your second choice		
4	National and international security									
5	Economic and trade disruption							PB		
6	Migration pressures	PB								
7	Food security	RG								
8	Health crises	BT								
9	Energy security									
10										
11										

+ Sheet1

Coming up

Wednesday 15 June, 10.00 – 11.00 a.m.

Cadence conversation: a peer-support space where you can bring your own climate risk concerns and issues

Future events

- **Stay or go:** planning and public engagement on coastal realignment and inundation
- **Breadbasket failure:** Food resilience and the transition to regenerative agriculture





Cadence Conversations

A space for participants to lead with their own concerns and issues in a climate of peer-support

- Meet others who are considering the impacts of environmental breakdown in their work and in society
- Explore questions of common concern, and develop responses for personal and collective action and advocacy.

Thank you for coming

- Please let us have your feedback
<https://bit.ly/cadencefeedback>
- Sign up for our e-bulletin for details of our next workshop
<http://bit.ly/cadencemail>
- CPA therapeutic support: three free sessions with a professional
<https://www.climatepsychologyalliance.org/support/indsupport>

